



**POLLUX P-4010**

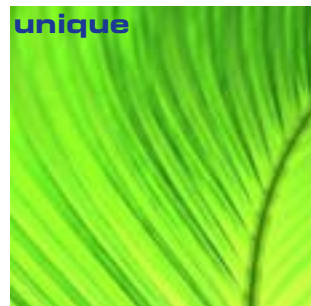
## **The flexible vertical scanning solution**

The Pollux is an innovative food retail scanner, optimised for vertical installations. Many retailers enjoy its combination of an unequalled performance and enormous installation flexibility. Furthermore, the Pollux is famous for its unsurpassed quality standard. Before a Scantech scanner gets shipped it has to pass three different quality tests, for this reason Scantech ID scanners are associated with the guarantee of durability. Another great advantage is the EAS compatibility. The Pollux has the largest deactivation field of all vertical scanners in the market. It is also one of the flattest scanners available today, making retrofit installations at existing checkouts even easier.

**transparent**



**solid**



**unique**

## General information

The Scantech Pollux P-4010 is the benchmark for vertical supermarket and hypermarket scanning. The dense scan pattern of the Pollux guarantees excellent omni-directional bar code reading. Scantech's new Scantium decoder chip gives the Pollux an unrivalled multi-decoding power.

## Cost of ownership

The Pollux features Scantech's unique and patented Goldrush polygon technology. Evaporated gold on the polygon makes it ultra light, giving longer motor life and faster "wake-up" times from the energy saving sleep mode. In addition, a flash EPROM gives the possibility to upgrade the firmware within the twinkling of an eye.

## Reading of damaged bar codes

Thanks to the specially developed STAR software, the Pollux can easily read truncated codes and substandard codes from a distance as well as on the window. Even damaged or frozen food codes are no problem for the special code stitching intelligence of the Pollux.

## Ergonomics and ease of use

The Pollux has a unique four-directional sealed optical assembly, allowing it to be turned inside the fixed scanner housing. This ensures an ergonomic and user-friendly implementation wherever it is installed.

## Flexibility


The Pollux comes in two interface versions: RS232 and OCIA or IBM RS485 and Keyboard Wedge. This makes multiple installations and migration from one PoS system to another very straightforward. An auxiliary port for connecting a hand held scanner is standard.

# POLLUX P-4010

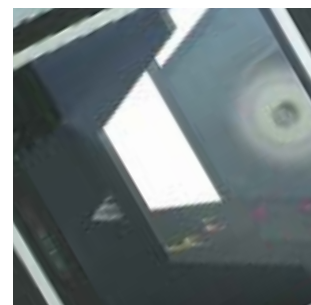
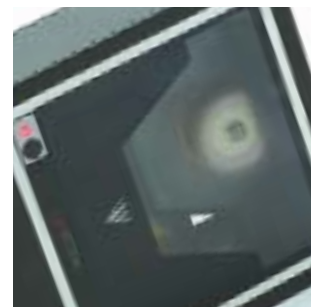
## specifications

**Physical** depth: 70 mm • width: 210 mm length: 183 mm • weight: 1,2 kg **Dual interfaces** RS232C - OCIA • IBM RS485 - KBW **Electrical** power supply voltage: 100 - 240 V ac, 50/60 Hz • DC input to scanner (aux. port not in use): +12 V dc (600 mA), -12 V dc (25 mA), +5 V dc (350 mA) **Optical** light source: visible laser diode 670 nm 5-field, 20 lines scan pattern • scan rate: 2000 scans/second • depth of scan field: 300 mm **Operating environment** 0°C to 40°C • relative humidity to 95% (non-condensing) **Supported codes** EAN/UPC/JAN including AddOn • code 128 • EAN 128 • code 39 • code 32 • codabar • interleaved 2/5 **Compatibility** EAS compatible

**Safety** The Pollux P-4010 complies with:

- laser safety IEC 825-1 (1993) Class I, U.S. 21CFR1040 Class IIa
- electrical safety EN 60950 (second edition), UL1950 (third edition), c-UL (according CSA22.2.950-95)
- radio and tv interference EN 55022 Class B (1994), FCC part 15 Class B (1992)
- radio frequency immunity EN 50082-1 (1992)
- harmonic current emissions EN 61000-3-2 (1995) 

**Specifications may change without prior notice.**



SCANTECH ID

**Scantech-ID BV**

**Vertrieb Schweiz**

ADES

Ruchstuckstrasse 12

Tel +41 (0)1 835 20 60

Fax +41 (0)1 835 20 69

info@ades.ch

www.scantech-id.ch