

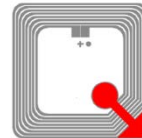
CCH1309-4

Protocol

ISO 14443A

Operating frequency

About 14.3MHz



Antenna size

25*25mm/ 0.98*0.98 inch

Electrical Specifications

Ntag 213 memory sections

Name	Size
Ntag 213	144 bytes user memory
Ntag 215	504 bytes user memory

General Characteristics of Inlay

Inlay Substrate Material	PET
Antenna Material	Aluminum
Operating Temperature	-40 °C - 85 °C / 40 °F - 185 °F
Bending Diameter	>50mm / 1.97"
Static Pressure	< 10MPa

Delivery formats

Available formats	Dry/ wet inlay, tag
Quality	100% performance tested